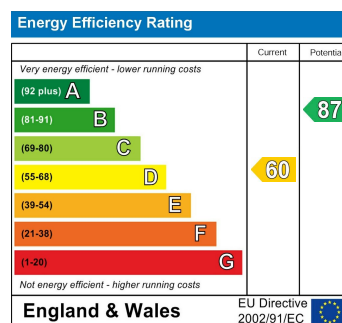
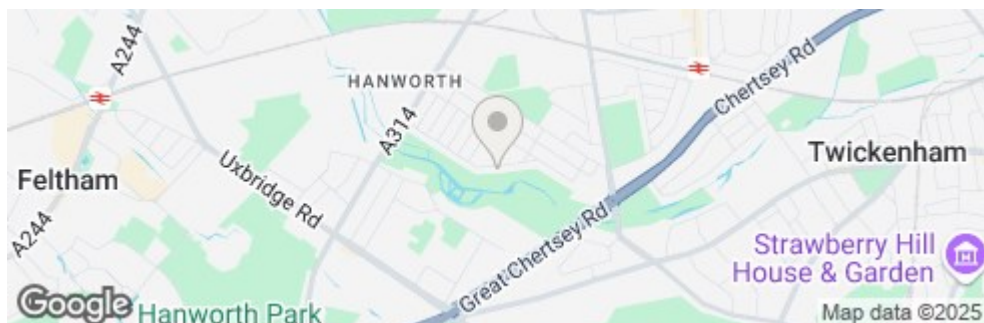
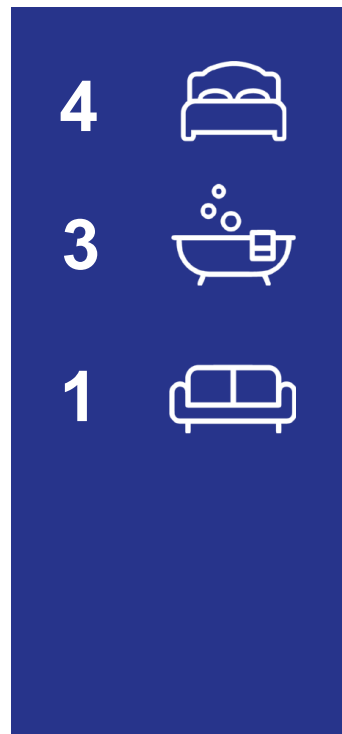
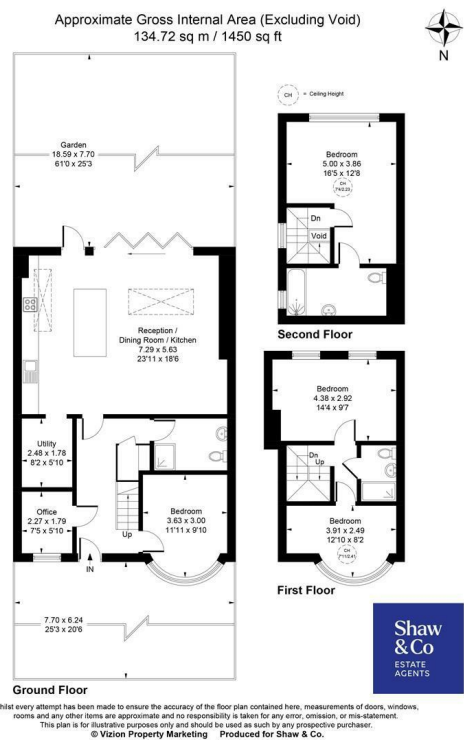


£960,000
Ellerman Avenue

Twickenham, TW2 6AA



- 4 Bedroom Semi-Detached
- Chain Free
- Driveway
- Completely Refurbished
- Spacious Living
- Sought After Location

Agents Note: These particulars are for guidance only. All measurements area approximate and should be rechecked by buyers / tenants. While care has been taken to ensure accuracy, they should be solely relied upon.

**Shaw
& Co**
ESTATE
AGENTS

OFFICE ADDRESS
Whitton
Twickenham
TW2 7LT

OFFICE DETAILS
0208 894 3646
whitton@shawandcoestates.com